

Endoscopic Surgical Stapler



Disposable Powered Endoscopic Linear Cutter Stapler

Be applicable for resection, transection and creation of anastomosis in laparoscopic surgery.

Disposable Powered Endoscopic Linear Cutter Stapler&Reload Cartridge



Applicable Operation

Be applicable for resection, transection and creation of anastomosis in laparoscopic surgery.

Production Characteristics

- 1 Electric drive; Smoother firing; Reduce tip wobble when severing tissue. This protects blood vessels and adjacent vital tissue better.
- 2 The cartridge non-damaging protrusion (RGST) technology, which provides a stronger grip and prevents tissue from slipping
- 3 Drop-shape anvil is more conducive to "B"-shaped nails, reducing bleeding and preventing anastomotic leakage.
- 4 Insurance design to ensure surgical safety:
 - a. Before firing, the safety switch needs to be moved to pull the firing handle;
 - b. During firing, the cutting knife will advance automatically when the firing handle is pulled.
 - c. After the firing is completed, the motor will stop automatically;
 - d. When the firing handle is released, the cutter returns automatically and the instrument locks automatically to prevent re-firing.
- 5 Flexible jaw opening and closing. 360 ° rotation. Left and right can be rotated 45°. This facilitates flexible access to different surgical sites.
- 6 The jaws are rotated directly by turning the handle without contacting other organs or tissues, which avoids tissue damage caused by excessive force on the front end of the jaws.
- 7 The stapler operation is more convenient. The suture is fast and the operation time is shortened.

Optimized Device Performance Guide

Loading the device

Proper reload selection: Tissue thickness should be carefully evaluated prior to using the instrument. Refer to the **Reload Product Codes Chart**, located in the Instructions for Use, for proper reload selection. Selection of the appropriate staple reload should be based upon the combined thickness of both the tissue and the staple line reinforcement material.



Device closure



For complete product details, see Instructions for Use.

Technological Parameters

Model	Product description	Length of shaft
RQJB-45/60	Standard shaft	340±15
RQJB-45L/60L	Longer shaft	440±15

Component Specifications

Model	RZJB45W/60W	RZJB45B/60B	RZJB45D/60D	RZJB45G/60G	RZJB45T/60T
Cartridge Color	White	Blue	Gold	Green	Black
Number of Staplers	88	88	88	88	88
Tissue Thickness	Vascular/Thin tissue	Regular	Regular/Thick	Thick	Thick
Open Stapler Height	2.5mm	3.5mm	3.8mm	4.1mm	4.2mm
Closed Stapler Height	1.0mm	1.5mm	1.8mm	2.0mm	2.3mm

Endoscopic Surgical Stapler



Disposable Endoscopic Linear Cutter Stapler

- 3+1 reset mode, symmetrical ergonomic design, the operation can be completed by the left or right hand independently.
- Safety lock design, to prevent accidents due to accidental touch
- Cartridge has no damaged bulge(RGST) technology, stronger grip, and prevents tissue slippage.
- The drop-shaped staple anvil is more conducive to "B" nail formation, reducing bleeding and preventing anastomotic leakage
- Stapler can be 360° rotary, the left and right can be 45° rotation, more convenient for flexible access to different surgical sites.

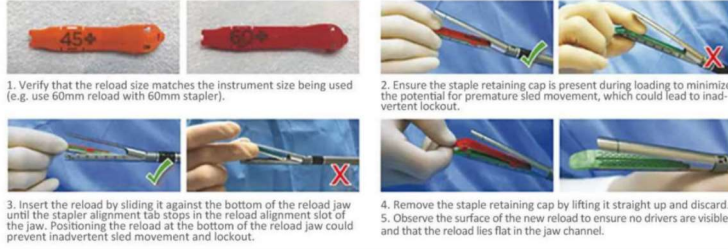
Disposable Endoscopic Linear Cutter Stapler&Reload Cartridge



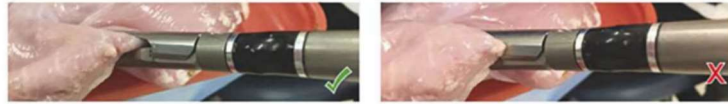
Optimized Device Performance Guide

Loading the device

Proper reload selection: Tissue thickness should be carefully evaluated prior to using the instrument. Refer to the **Reload Product Codes Chart**, located in the Instructions for Use, for proper reload selection. Selection of the appropriate staple reload should be based upon the combined thickness of both the tissue and the staple line reinforcement material.



Device closure



For complete product details, see Instructions for Use.

Technological Parameters

Model	Product description	Length of shaft
RYQJ-45Q/60Q	Standard Shaft	340±15
RYQJ-45LQ/60LQ	Longer Shaft	440±15

Component Specifications

Model	RGST45W/60W	RGST45B/60B	RGST45D/60D	RGST45G/60G	RGST45T/60T
Cartridge Color	White	Blue	Gold	Green	Black
Number of Staplers	88	88	88	88	88
Tissue Thickness	Vascular/Thin tissue	Regular	Regular/Thick	Thick	Thick
Open Stapler Height	2.5mm	3.5mm	3.8mm	4.1mm	4.2mm
Closed Stapler Height	1.0mm	1.5mm	1.8mm	2.0mm	2.3mm

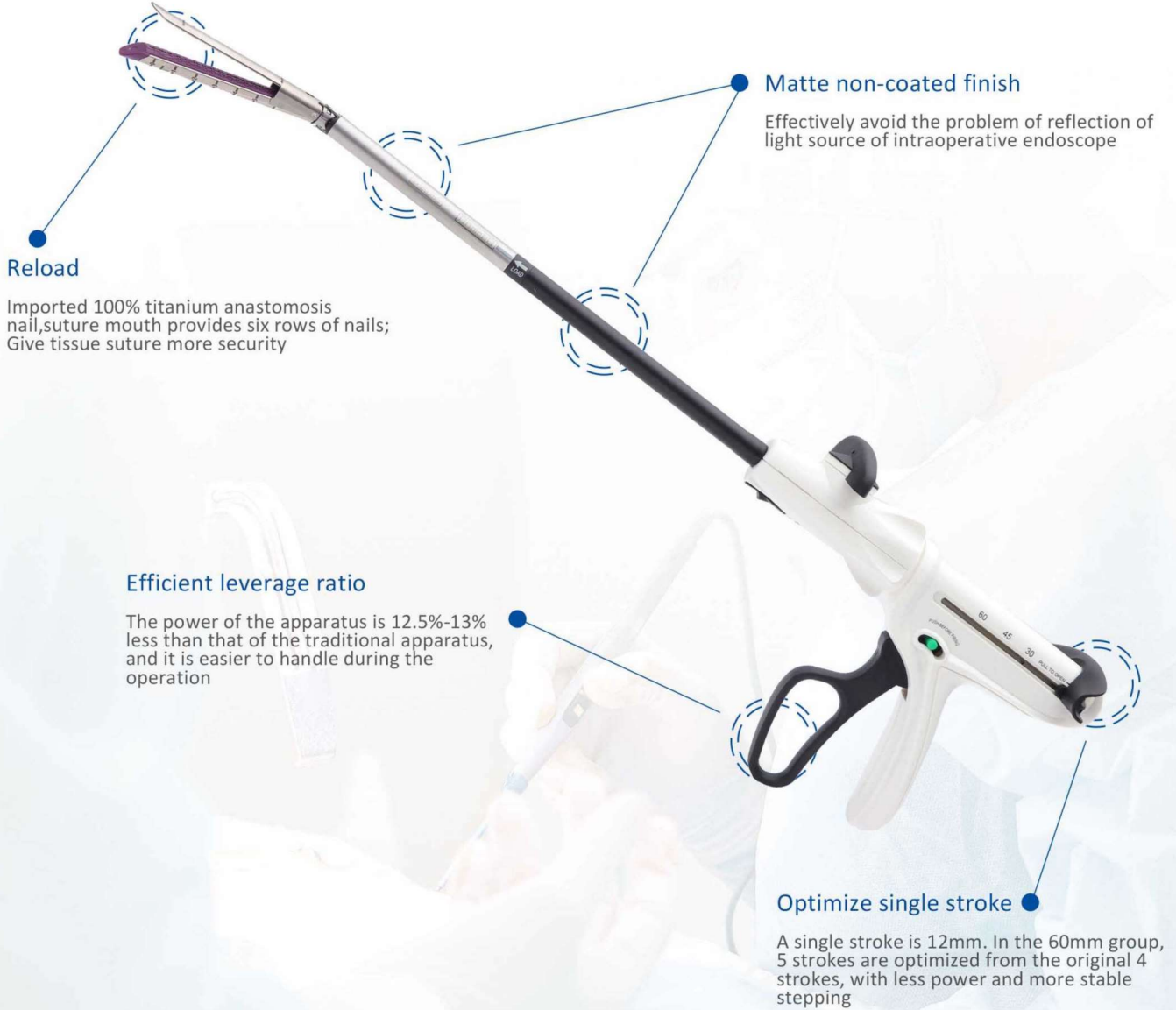
Applicable Operation

Be applicable for resection, transection and creation of anastomosis in laparoscopic surgery.

Production Characteristics

- 1 Cartridge has no damaged bulge(RGST) technology, stronger grip, and prevents tissue slippage.
- 2 Safety lock design, to prevent accidents due to accidental touch.
- 3 3+1 reset mode, symmetrical ergonomic design, the operation can be completed by the left or right hand independently.
- 4 Titanium alloy material staples, utilizing titanium memory features effectively prevent bleeding caused by tissue rebound.
- 5 The drop-shaped staple anvil is more conducive to "B" nail formation, reducing bleeding and preventing anastomotic leakage.
- 6 Thin anvil, smooth entry, no large gap, reduce tissue damage.
- 7 Patented arc-shaped staple legs design, prevent falling off before use, good tissue penetration.
- 8 Stapler can be 360° rotary, the left and right can be 45° rotation, more convenient for flexible access to different surgical sites.
- 9 Equidistant gap control ensures uniform distal and proximal staples on the loading unit, ensuring consistent suture results.

Endoscopic Surgical Stapler



Disposable Endoscopic Linear Cutter Stapler

- Three-row with different altitude titanium staples technology, while hemostasis, ensure the blood supply required for the healing of the anastomosis.
- Safety lock design, to prevent accidents due to accidental touch
- The drop-shaped staple anvil is more conducive to "B" nail formation, reducing bleeding and preventing anastomotic leakage
- Stapler can be 360° rotary, the left and right can be 45° rotation, more convenient for flexible access to different surgical sites.

Disposable Endoscopic Linear Cutter Stapler&Reload Cartridge



Applicable Operation

Be applicable for resection, transection and creation of anastomosis in laparoscopic surgery.

Production Characteristics

- 1 Components can be 45 degree of rotation, flexible access different surgical site;
- 2 Three rows of staple with different altitude to ensure effect of anastomosis;
- 3 The control mechanism for equidistant clearance ensures that the staples at distant end and proximal end are uniform on the loading unit;
- 4 With the wide anterior opening of loading unit, the tissue can be inspired conveniently. The design of thin anvil make it smooth for entering without larger clearance separation so that the tissue damages are reduced;
- 5 The indicatory on cutter head is used to indicate the position of cutter head under the endoscope for better safety;
- 6 With 360 degree rotary, it is convenient to reach the tissue;
- 7 With the symmetrically-ergonomic design, the surgical operation can be achieved independently with left and right hand;
- 8 Intuitive and simple handle design, can make the doctor be clear at a glance, easy to operate;
- 9 Equipped with the safety inter lock device to prevent the used loading unit from being triggered again, thus ensured safety in surgical operation;
- 10 Strengthen the anvil design, to provide tissue closure force, so that the distal staple, proximal gap consistent to ensure the consistency of the effect of stitching.



Rotatory Reloading Cartridge

Three rows with different altitude staples, provided with a disposable blade



Hawk Beak Reloading Cartridge

With a slender hawk beak-shaped front end that prevents the tissue from slipping off during firing, tissue placement is more convenient.

Technological Parameters

Product Name	Model	Product description	Length of shaft
Disposable Endoscopic Cutter Stapler	RYQJ-100	Shorter shaft	100
	RYQJ-160	Standard shaft	160
	RYQJ-260	Longer shaft	260

Component Specifications

Model	RYQJZJ(B)-30L	RYQJZJ(B)-45L	RYQJZJ(B)-45H	RYQJZJ(B)-45H1	RYQJZJ(B)-45M	RYQJZJ(B)-45M1	RYQJZJ(B)-60H	RYQJZJ(B)-60H1	RYQJZJ(B)-60M	RYQJZJ(B)-60M1
Cartridge Color	White	White	Blue	Purple	Green	Black	Blue	Purple	Green	Black
Suture length(mm)	30	45	45	45	45	45	60	60	60	60
Application	Vessel/Thinner tissue	Vessel/Thinner tissue	Normal tissue	Normal tissue	Thick tissue	Thick tissue	Normal tissue	Normal tissue	Thick tissue	Thick tissue
Height of staples(mm)	2.5	2.5	3.5	3.5/3.5/4.0	4.8	4.5/4.5/4.8	3.5	3.5/3.5/4.0	4.8	4.5/4.5/4.8
Closed Stapler Height	1.0	1.0	1.5	1.25-1.75	2.15	1.75-2.15	1.5	1.25-1.75	2.15	1.75-2.15
Suitable Trocar diameter(mm)	12	12	12	12	15	15	12	12	15	15

Open Surgical Stapler

Be applicable for: the rectal mucosa prolapse in the anal tube or hemorrhoid mucosa tissue suturing repair, internal hemorrhoid in all stages, internal hemorrhoid of mixed hemorrhoid, anal papillae, and rectal polyp; the reconstruction of the digestive tract such as stomach, intestine; the creation of anastomosis or incision closure of other organs; the suture of clinical circumcision; the end to end, end to side, side to side anastomosis in esophageal, gastric, intestinal, etc clinical operation; the closing of skin wounds.

Disposable Three-Row Hemorrhoid Stapler



Applicable Operation

Be applicable for Dedicated to anal hemorrhoidectomy and excision of rectal prolapse.

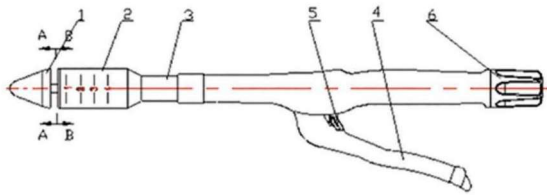


Fig.1-Type:A

1.Anvil; 2.Stapling and Cutting Component; 3.Circle Tubing; 4.Firing Handle;
5.Safety Block; 6.Adjusting Knob

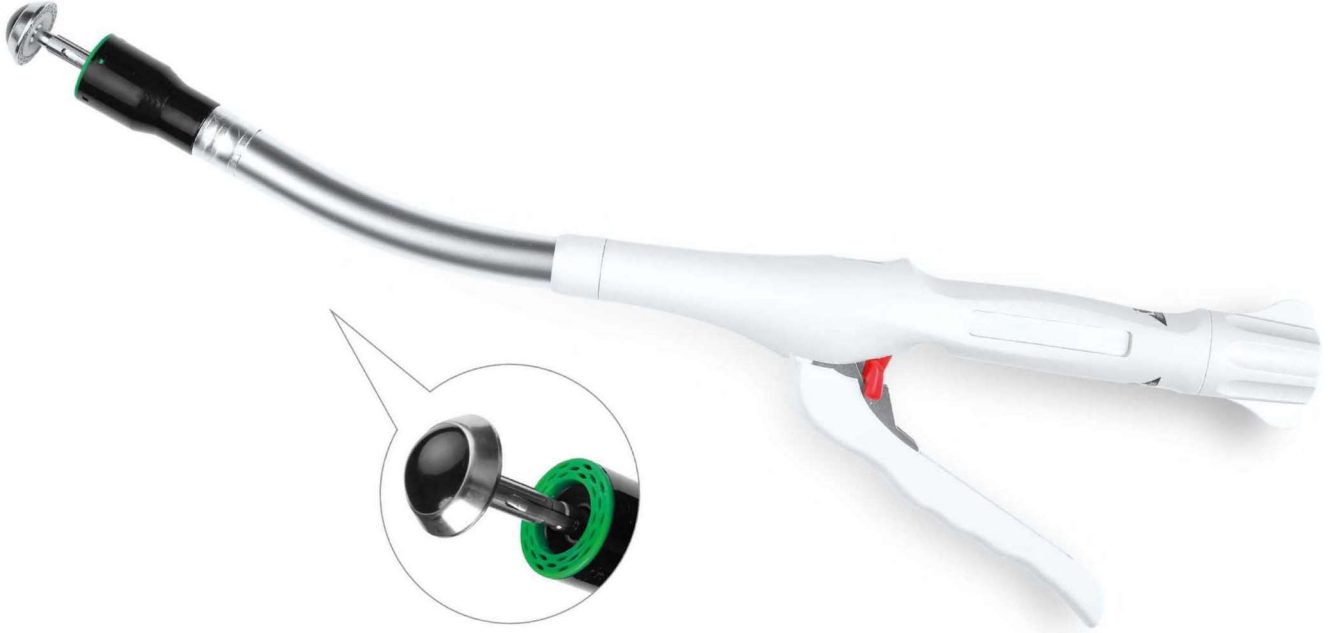
Production Characteristics

- ① Exceptional hemostatic effect
- ② The special design of the outer ring prevents anastomotic tissue from excessive squeezing
- ③ 48 three-row titanium screws around can effectively close the tissue.
- ④ A greater lumen of the staple cartridge can hold more diseased tissue
- ⑤ Stainless steel anvil and stainless-steel guide shaft to make the closing and firing more stable
- ⑥ Two symmetrical sutures help the tissue to enter into the equipment
- ⑦ The sharp circular knife can effectively cut.
- ⑧ 0.75mm suture clearance compress the mucosa of the best hemostatic effect
- ⑨ Fool-firing position
- ⑩ Improved B-type staple make the anastomotic a higher tensile strength.

Technological Parameters

Type	External Diam.(mm)	Ring cutting External Diam.(mm)	Number of staples	Height of Staples(mm)
RYGC-34III	34	23.1	48	3.8

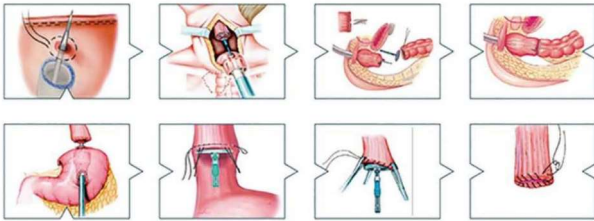
Disposable Three-Row Circular Stapler



Applicable Operation

Particularly suitable for difficult to expose the site of the anastomosis, such as pelvic anastomosis, high abdominal anastomosis, chest top anastomosis.

Indications



Production Characteristics

- 1 The RYWG III series disposable circular stapler is for single use only, avoiding the possible cross-infection.
- 2 It has large cutter diameter.
- 3 With the quicker opening and closing mechanism, it is much more comfortable to use.
- 4 Slow closing safety zone allows the final tissue manipulation.
- 5 The thickness of tissue that will be clamped can be adjusted according to the actual conditions.
- 6 The knife is designed according to the ergonomics principles.
- 7 The product is equipped with the advanced driving mechanism.

Technological Parameters

Type	External Diam.(mm)	Ring cutting External Diam.(mm)	Number of staples	Height of Staples(mm)
RYWG-24 III	24.1	24.1	30	3.8
RYWG-26 III	26.1	26.1	36	3.8
RYWG-29 III	29.1	29.1	36	3.8
RYWG-32 III	32.1	32.1	45	3.8

Disposable Hemorrhoid Stapler



Applicable Operation

Be applicable for rectal mucosa prolapse in anal tube or hemorrhoid mucosa tissue suturing repair.

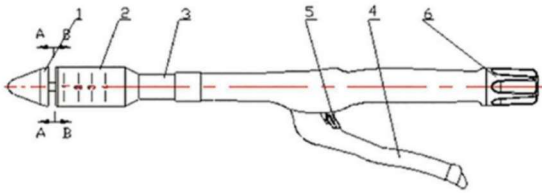


Fig.1-Type:A

1.Anvil; 2.Stapling and Cutting Component; 3.Circle Tubing; 4.Firing Handle;
5.Safety Block; 6.Adjusting Knob

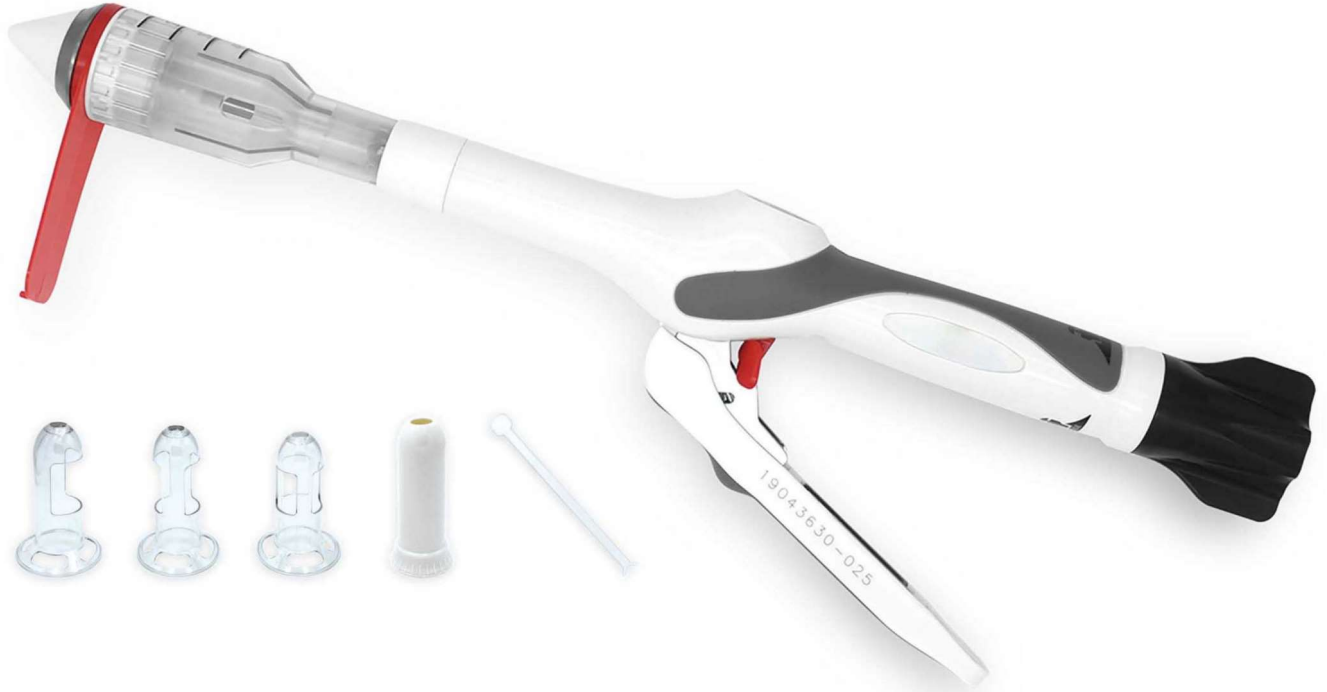
Production Characteristics

- ① Reasonable number of staples reduce postoperative bleeding;
- ② Imported titanium staples with higher intensity and tensility;
- ③ Large volume of cartridge to contain more tissue;
- ④ Integral shaping anvil to ensure the shape of staples;
- ⑤ Adjust gap between anvil and cartridge to avoid the damage to tissue caused by over pressure;
- ⑥ Minimum gap between anvil and cartridge to avoid the damage to tissue caused by over pressure;
- ⑦ Normal anal cushions and mucosal bridge can be maintained, to keep a maximum subtle feeling and anal contraction, it' s effective in preventing anastomotic stricture.
- ⑧ Special designed endoscope to form different windows, to expose mucosal hemorrhoid area only, which is more targeted.

Technological Parameters

Type	External Diam.(mm)	Ring cutting External Diam.(mm)	Number of staples	Height of Staples(mm)
RYGC-32	32	24	32	4.0
RYGC-34	34	26	34	4.0

Disposable Visible Hemorrhoid Stapler



Applicable Operation

Be applicable for rectal mucosa prolapse in anal tube or hemorrhoid mucosa tissue suturing repair.

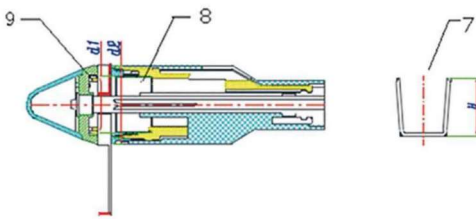


Fig. 4 Stapling and Cutting Component(Transparent or Non-Transparent)
7.Staple; 8.Circle Cutting Knife; 9.Cutter Spacer

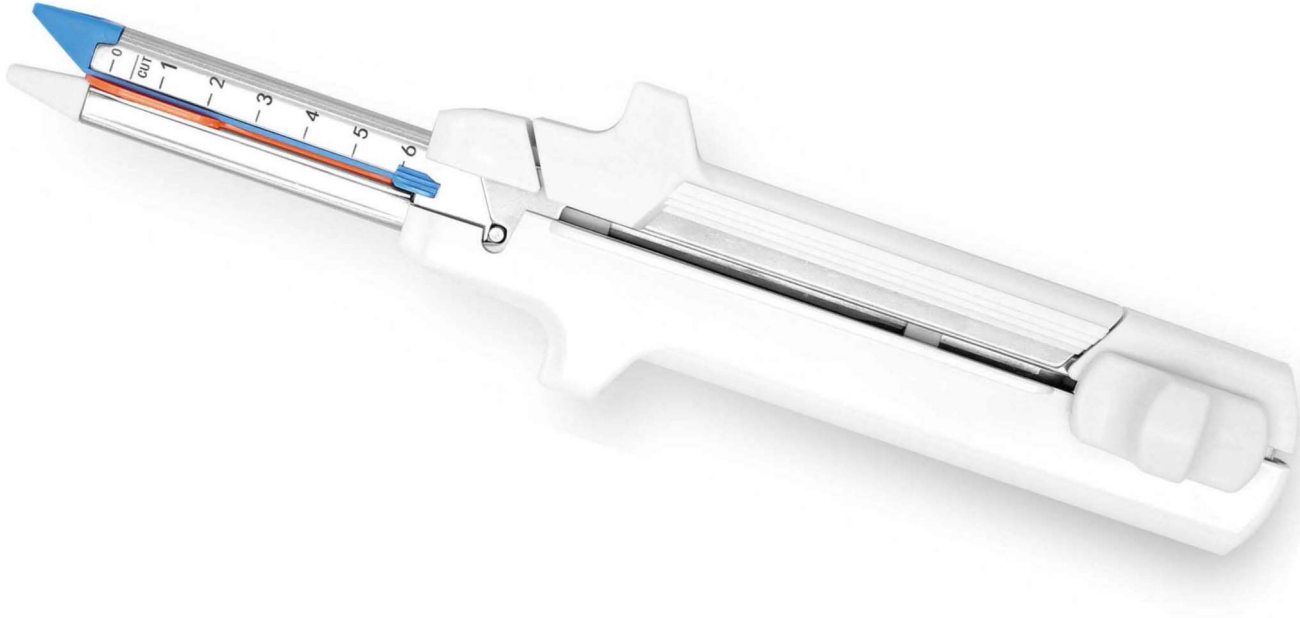
Production Characteristics

- 1 Transparent staple cartridge and push nail make visual feedback more clear;
- 2 Reasonable number of staples reduce postoperative bleeding;
- 3 Imported titanium staples with higher intensity and tensility;
- 4 Integral shaping anvil to ensure the shape of staples;
- 5 Large volume of cartridge to contain more tissue;
- 6 Adjust gap between anvil and cartridge to avoid the damage to tissue caused by over pressure;
- 7 Minimum gap between anvil and cartridge to avoid the damage to tissue caused by over pressure.

Technological Parameters

Type	External Diam.(mm)	Ring cutting External Diam.(mm)	Number of staples	Height of Staples(mm)
RYHS-32	32	24	32	3.8
RYHS-34	34	26	34	3.8

Disposable Linear Cutter Stapler



Applicable Operation

Be applicable for reconstruction of digestive tract such as stomach, intestine, and creation of anastomosis or incision closure of other organs.

Blade safety can prevent from injuring and secondary firing.
New blade with each cartridge, clean, cut smoothly, and prevent from cross infection or implantation metastasis.



EACH CARTRIDGE IS BUILT-IN AN NEW 440 SERIES STAINLESS STEEL BLADE, SIMILAR TO THE SURGICAL BLADE

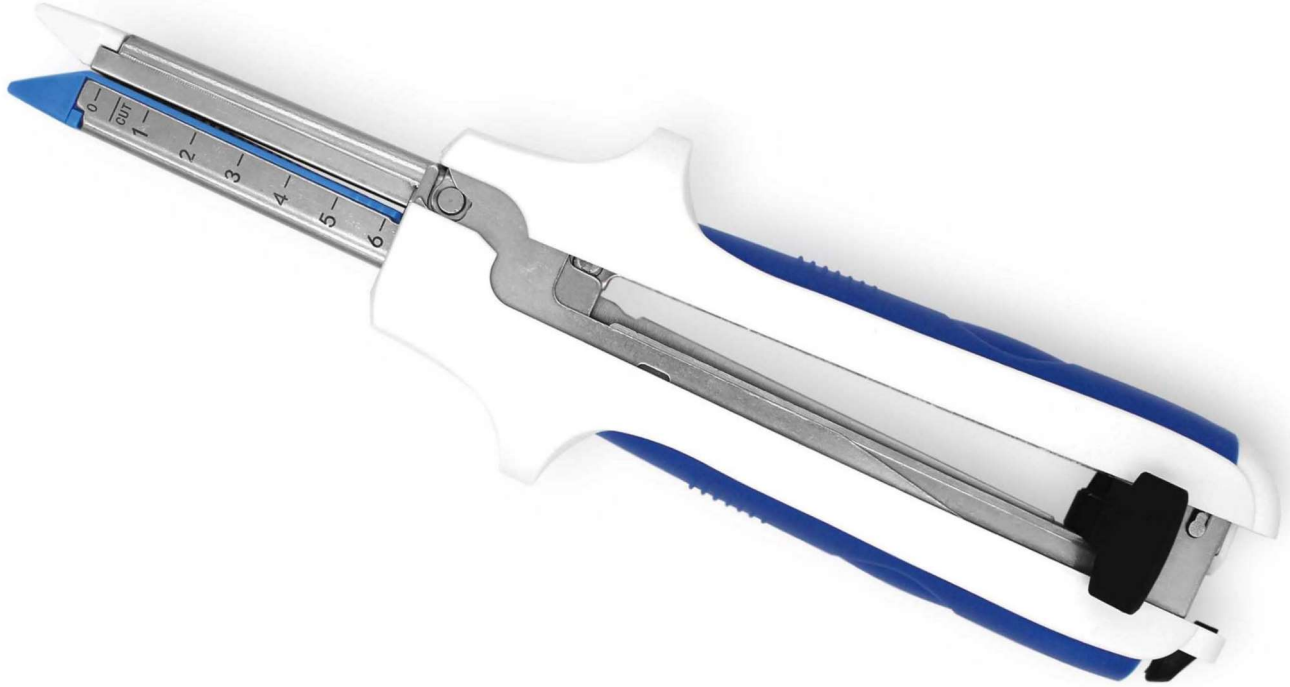
Production Characteristics

- 1 Large jaw opening facilitates adjusting position;
- 2 Intermediate locking system is more convenient and reliable;
- 3 Special self-locking system to prevent wrong firing;
- 4 Imported titanium staples with higher intensity and tensility;
- 5 Integral shaping anvil to ensure the shape deployed on the tissues;
- 6 Supporting pin in the cartridge makes force deployed evenly on the tissues;
- 7 Enhanced and unique non-slip handle design is more comfortable, safe and stable.

Technological Parameters

Model	RYZQ-60H	RYZQ-60L	RYZQ-100H	RYZQ-100L
Cutting length(mm)	60	60	100	100
Suture Length(mm)	63	63	103	103
Suture Thickness(mm)	1.5-2.5	1.2-2.0	1.5-2.5	1.2-2.0
Number of staples	64	64	104	104
Height of staplers(mm)	4.8	3.8	4.8	3.8

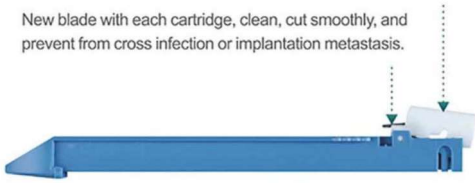
Disposable Linear Cutter Stapler



Applicable Operation

Be applicable for reconstruction of digestive tract such as stomach, intestine, and creation of anastomosis or incision closure of other organs.

Blade safety can prevent from injuring and secondary firing.
New blade with each cartridge, clean, cut smoothly, and prevent from cross infection or implantation metastasis.



EACH CARTRIDGE IS BUILT-IN AN NEW 440 SERIES STAINLESS STEEL BLADE, SIMILAR TO THE SURGICAL BLADE

Production Characteristics

- ① Large jaw opening facilitates adjusting position;
- ② Intermediate locking system is more convenient and reliable;
- ③ Special self-locking system to prevent wrong firing;
- ④ Imported titanium staples with higher intensity and tensility;
- ⑤ Integral shaping anvil to ensure the shape deployed on the tissues;
- ⑥ Supporting pin in the cartridge makes force deployed evenly on the tissues;
- ⑦ Enhanced and unique non-slip handle design is more comfortable, safe and stable.

Technological Parameters

Model	Cutting length(mm)	Suture Length(mm)	Suture Thickness(mm)	Number of staples	Height of staplers(mm)
RYZQ-80H	80	83	1.5-2.5	84	4.8
RYZQ-80L	80	83	1.2-2.0	84	3.8

Disposable Linear Stapler&Reload Cartridge



Cartridge

Model	Color of Cartridges
ZXZJ(B)-30H/L	Green/Blue
ZXZJ(B)-45H/L	Green/Blue
ZXZJ(B)-60H/L	Green/Blue
ZXZJ(B)-90H/L	Green/Blue

Applicable Operation

Be applicable for reconstruction of digestive tract as stomach, intestine, and creation of anastomosis or incision of other organs.

Production Characteristics

- 1 Clamp the tissue automatically, be simple to operate by single hand;
- 2 Two-section close, conduces to reposition the closed tissue conveniently;
- 3 Imported titanium staples with higher intensity and tensility;
- 4 Integral shaping anvil to ensure the shape of staples;
- 5 Manual control retaining pin to make operation more convenient.

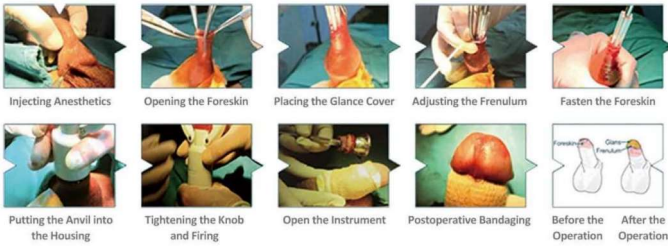
Technological Parameters

Model	RYZX(B)-30V	RYZX(B)-30H/L	RYZX(B)-45H/L	RYZX(B)-60H/L	RYZX(B)-90H/L
Suture length(mm)	35	35	46	62.5	95.5
Suture Thickness(mm)	0.5-1.2	1.5-2.5/1.0-2.0	1.5-2.5/1.0-2.0	1.5-2.5/1.0-2.0	1.5-2.5/1.0-2.0
Number of Staples	23	11	15	21	33
Height of Staples(mm)	2.5	4.8/3.8	4.8/3.8	4.8/3.8	4.8/3.8

Disposable Circumcision Stapler



Operation Procedure



Applicable Operation

Be applicable for clinical circumcision suture.

Production Characteristics

- 1 Simple and quick, standard and safe, short time (3~5 minutes);
- 2 No stitches, one complete;
- 3 Cut neat appearance, no affect the visual experience;
- 4 Abstinance period is short;
- 5 Make body more healthy and life more harmonious.

Technological Parameters

Model	RYB-(B/E)12N	RYB-(B/E)15N	RYB-(B/E)18N	RYB-(B/E)22N	RYB-(B/E)26N	RYB-(B/E)30N	RYB-(B/E)32N	RYB-(B/E)34N
Diameter of Cartridge ring(mm)	17.2	19.2	22.2	26.2	29.2	33.4	36.2	37.4
Height of Staplers H(mm)	3.5	3.5	3.5	3.5	3.5	3.5	3.5	3.5
No. Of Titanium staple	10	11	13	16	18	20	22	24

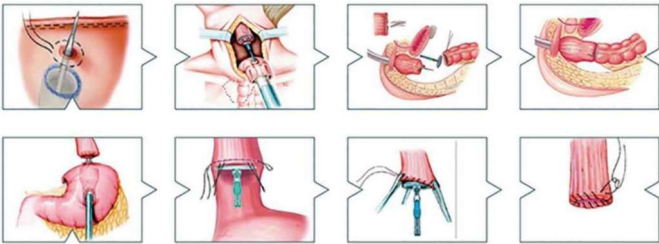
Disposable Circular Stapler



Applicable Operation

Be applicable for end to end, end to side, side to side anastomosis in esophageal, gastric, intestinal etc clinical operation.

Indications



Technological Parameters

Type	RYCS-21	RYCS-24	RYCS-26	RYCS-29	RYCS-32	RYCS-34
External diam(mm)	21.6	23.6	25.6	28.6	31.6	33.6
Blade Diam(mm)	13	15	17	20	22	24
Number of staples(mm)	18	18	20	24	30	32
Height of Staples(mm)	4.8	4.8	4.8	5.2	5.2	5.2

Production Characteristics

- 1 The green one of indicator can easily show the thickness of tissue to be cut and anastomosed;
- 2 Reasonable number of staples conduce to reduce the postoperative bleeding;
- 3 Imported titanium staples with higher intensity and tensility;
- 4 Integral shaping anvil to ensure the shape of staples;
- 5 Large diameter ratio, avoids anastomotic stenosis effectively;
- 6 Minimum gap between anvil and cartridge to avoid the damage to tissue caused by over pressure;
- 7 Streamline design is accordant with the human engineering, with as a comfortable powerful operation feel